

ONE YEAR LIMITED WARRANTY

WARRANTY: The company warrants this product to the original purchaser or gift recipient, to be free from defects in workmanship and materials under normal use and services, for a period of one year from the date of purchase.

LIMITATIONS: ALL WARRANTIES IMPLIED BY STATE OR PROVINCIAL LAW, INCLUDING THE IMPLIED WARRANTIES OF MERCHANTABILITY AND FITNESS FOR A PARTICULAR PURPOSE, ARE EXPRESSLY LIMITED TO THE DURATION OF THE LIMITED WARRANTIES SET FORTH ABOVE. Some jurisdictions do not allow limitation on how long an implied warranty lasts, so the above limitation may not apply to you. IN NO EVENT SHALL THE COMPANY BE LIABLE FOR ANY INCIDENTAL OR CONSEQUENTIAL DAMAGES, LOSS OF PROFIT OR MEDICAL EXPENSES CAUSED BY ANY DEFECT, FAILURE, MISUSE, OR MALFUNCTION OF THE PRODUCT. Some jurisdictions do not allow the exclusion of limitation by incidental or consequential damages, so the above limitation or exclusion may not apply to you. The company will not be responsible for damages or losses, direct or indirect, caused by misuse, abuse, accident, negligence, conditions of transport or storage, or failure to follow instruction. The company will not be responsible for any statements that are made or published, written or oral, that are inconsistent with this written warranty, or which are misleading or inconsistent with the facts as published in the literature or specifications furnished by the Company. This warranty gives you specific legal rights, and you may also have other rights which vary from state to state.

Warranty Claims Procedure: Any product that proves defective within the warranty period will, transportation charges pre-paid, be repaired or replaced at the option of the Company, free of charge. Si . . .



Equine 12 Pad Blanket Therapy System

Read the contents of this
booklet carefully before use



Phone 1-800-975-0253 if you have questions not answered in these instructions.

INSTRUCTIONS FOR USE - Please read carefully

General Step by Step Guidelines:

Your Thermotex Equine 12 Pad Blanket Therapy System is easy to use.

- When using Thermotex, ensure the horse is tethered and that the extension cord is secured above and behind the horse.
- The Thermotex Equine 12 Pad Blanket Therapy System uses a four-position switch (off-low-high-off). We recommend that you start the treatment on the high setting (for the first 10 minutes) and then reduce to the lower setting for the remainder of the treatment.
- It is important that you use the Thermotex 12 Pad Blanket for a minimum of 30 – 45 minutes (longer if desired) on each area that you are treating. Regular use of Thermotex will aid significantly in the reduction of inflammation and lactic acid build up.
- **Every horse will sweat** at first use, especially in sore areas. However, after approximately one week of use (for 1/2 hour per day) sweat areas will reduce in size as soreness is relieved.
- When used as a pre-event/pre-race warm up, it is most beneficial to use within four hours of the event/race.
- If treating a horse that has been given Lasix, which is a diuretic, treat with the Thermotex after the Lasix. Thermotex also has a diuretic effect and should not be used prior to the administration of Lasix.
- If your horse is on any **prescription drugs**, check with your veterinarian for any drug interaction with Infrared Therapy.
- If your horse has a **recent (acute) joint injury** please ask your veterinarian when Infrared Therapy can be initiated. If your horse has a joint or **joints that are chronically hot and swollen**, these joints may respond poorly to vigorous heating of any kind. Vigorous heating is strictly contraindicated in cases of enclosed infections be they dental, in joints or in any other tissues.

YOU WILL NOTICE:

- Dramatic improvement in the mood and temperament of the horse as soreness is decreased.
- During the use of the Thermotex 12 Pad Blanket, you may notice increased urination as the infrared heat increases blood flow which in turn increases kidney function.
- Due to increased circulation, injury recovery time is decreased.

Additional Thermotex Equine Therapy Systems



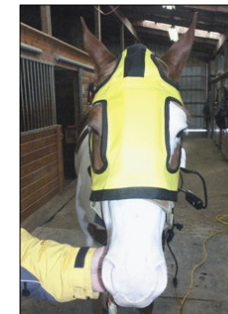
Thermotex Neck

For specific use on the neck this model has 2 - 5" x 13" infrared heat inserts utilizing 26 watts of power. This model has two adjustable panels and treats the neck and throat areas. This system is well suited for equestrian competitors.



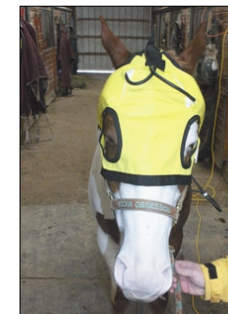
Thermotex Leggings (Pair)

With 2 - 3" x 13" and 2 - 3" x 8" infrared heat inserts for each leg, this system utilizes a total of 96 watts of power. A perfect fit for use on both front or hind legs.



Thermotex Therapeutic Hood

Ideal for treating sinus conditions, this model has 2 - 3" x 8" infrared heat inserts that are positioned to treat the sinus and throat. This system utilizes 24 watts of power.



Thermotex TMJ Hood

For specific use on the jaw area, this model has 4 - 3" x 8" infrared heat inserts utilizing 48 watts of power. This model is best suited for treatment of Temporomandibular Dysfunction giving pain relief and increasing blood flow.

- Thread the next right wire through slit at top of blanket and connect to 11" x 13" heat insert and place inside the lower portion of the right hand pocket #12.
 - ◇ Connect the 5" x 13" heat insert and place into top portion of right hand pocket #11.
- Thread next left wire through slit at the top of the blanket and connect to 11" x 13" and place inside the lower portion of the left hand pocket #9.
 - ◇ Connect 5" x 13" heat insert and place inside the top portion of left hand pocket #10.

Finally, tuck any exposed harness wire into the center Velcro webbing before closing.

CONTRAINDICATIONS

Should any sign of pain occur or if the condition worsens with the use of Thermotex, you should be discontinued use of the Thermotex product.

If your horse has a disease, be certain to consult with your veterinarian before using Thermotex.

DO NOT USE THERMOTEX IN CASES OF:
■ PREGNANCY AND INFECTIONS.

DO NOT APPLY THERMOTEX TO A JOINT THAT HAS BEEN TREATED WITH CORTISONE FOR THREE DAYS AFTER THE LAST CORTISONE INJECTION.

NOTE: These instructions are guidelines only and not intended to replace a veterinarian's advice. Should your horse's condition worsen, discontinue use and contact your veterinarian.

CAUTION: Do not use any ointments, salves and liniments under the Thermotex heat inserts. It is not necessary and may cause skin irritation due to the abrasive and irritant nature of some ointments, salves and liniments.

THERMOTEX is a deep-penetrating infrared therapeutic pain relief system different from all other types of therapeutic products on the market today.

FOR THE TEMPORARY RELIEF OF PAIN resulting from the inflammation of the joints, tendons and tissues associated with conditions such as Arthritis, Secondary Compensatory lameness, Myostitis, and Exertional Rhabdomyolysis (Tying up) to name a few.

FOR THE RELIEF OF STIFFNESS AND PAIN resulting from lactic acid build up in muscles and from pain and discomfort of strains and sprains.

FOR THE RELIEF OF PAIN ASSOCIATED WITH STRESS due to bleeding in the lungs.

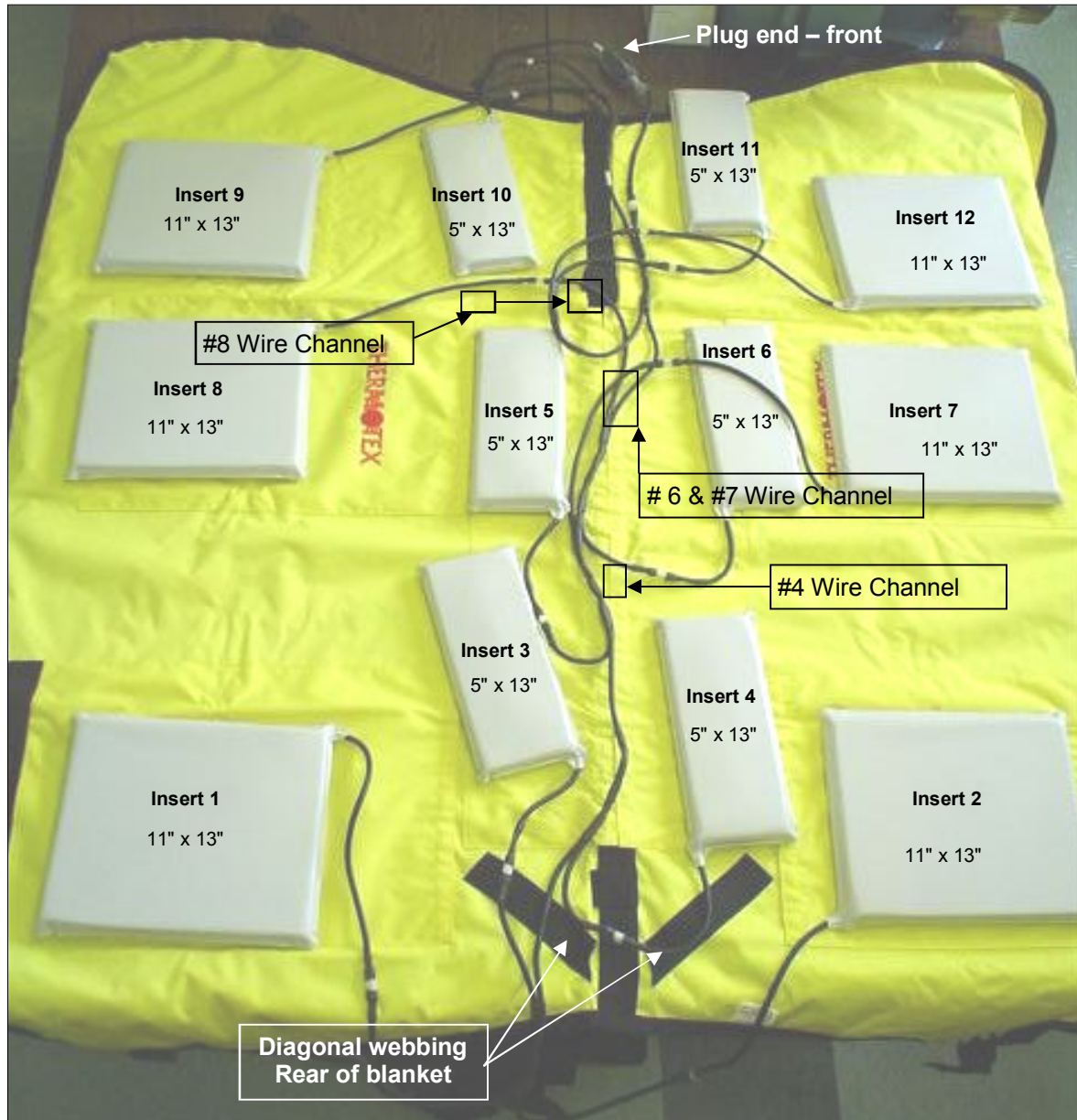
READ CAREFULLY

DANGER – TO REDUCE THE RISK OF BURNS, ELECTRIC SHOCK AND FIRE, THIS PRODUCT MUST BE USED IN ACCORDANCE WITH THE FOLLOWING INSTRUCTIONS:

- DO NOT PLUG IN AND LEAVE UNATTENDED.
- CHECK HIDE UNDER THE BLANKET FREQUENTLY.
- DO NOT USE LINIMENT, OINTMENT OR SALVE WHEN USING THIS PRODUCT.
- THERMOTEX THERAPEUTIC SYSTEMS DO NOT CAUSE DEHYDRATION OF BODY FLUIDS.
- NEVER USE THE BLANKET WITHOUT OUTER COVER IN PLACE.
- REMOVE THE HEAT INSERTS AND WIRING HARNESS BEFORE CLEANING OUTER COVER. WASH COVER IN COLD WATER WITH MILD DETERGENT IN AN OVERSIZED MACHINE, ON A GENTLE CYCLE AND HANG TO DRY. IF YOU IRON IT, USE A LOW SETTING. DO NOT BLEACH.
- WHEN NOT IN USE, STORE YOUR THERMOTEX 12 PAD BLANKET IN A CLEAN, DRY AREA, OUT OF REACH OF MICE. (HANGING , UNFOLDED IN A TACK ROOM IS BEST)
- PERIODICALLY EXAMINE THE HEAT INSERTS (PVC). RETURN THE BLANKET FOR REPAIR IF HEAT INSERTS SHOW ANY SIGN OF DETERIORATION.
- DO NOT USE PINS OR OTHER METALLIC MEANS TO FASTEN THE BLANKET IN PLACE.
- DO NOT FOLD OR BEND YOUR THERMOTEX HEAT INSERTS.
- NEVER PULL YOUR THERMOTEX BY THE ELECTRICAL CORD.
- CROSS TIE YOUR HORSE WHEN GIVING A TREATMENT WITH THERMOTEX.

SAVE THESE INSTRUCTIONS.

12 Pad Therapeutic Blanket Harness Layout for Set-Up



ASSEMBLE 12 PAD EQUINE HARNESS AND PADS IN BLANKET

Lay out blanket and heat inserts as shown in the photo to the left.
The Thermotex logo is on the two middle pockets (heat inserts that treat the lungs of the horse).

Open Velcro strip along the centre of the blanket, lay harness along the Velcro strip - the electric plug and switch should be at the front of the blanket as shown in the photo.

NOTE:

Ensure all heat inserts are placed in the pockets with the stamped side of the heat insert facing down (padded side goes to the outside of the blanket - facing away from the horse). There are 6, 11" x 13" heat inserts and 6, 5" x 13" heat inserts which fit into the pockets as shown. All pockets are closed using the Velcro. Some wires are made longer in order to adjust depth in pockets and may appear longer than needed. Simply tuck unused wire into the pocket behind the pad.

Standing at the rear of the blanket and harness, perform the following steps:

- Thread first left wire through the diagonal webbing starting at the center Velcro webbing towards the rear left hand pocket.
 - ◇ Connect to 11" x 13" heat insert and place inside the rear left hand pocket # 1.
- Thread first right wire through the slit in the center Velcro webbing at the rear of the blanket and then through the diagonal webbing towards the rear right hand pocket.
 - ◇ Connect to 11" x 13" heat insert and place inside the rear right hand pocket # 2.
- Connect next left wire to the 5" x 13" heat insert and place into small left hand pocket # 3.
- Thread next right harness wire through slit in the center Velcro webbing (# 4 Channel).
 - ◇ Connect wire to the 5" x 13" heat insert and place into small rear right hand pocket # 4.
- Connect next left wire to the 5" x 13" heat insert and place into small front left hand pocket # 5.
- Thread next right (Y) wire through slit in the center Velcro webbing (# 6 & 7 wire channel).
 - ◇ Connect wire to 5" x 13" heat insert and place into small front right hand pocket # 6.
 - ◇ Connect the other wire through the same slit as wire # 6 and then through the small slit at the top at the front of pocket # 6.
 - ◇ Connect the next right wire 11" x 13" heat insert and place into right hand lung pocket #7.
- Thread next right wire through the small slit in the bottom at the front of pocket # 5 shown as # 8 wire Channel in photo
 - ◇ Connect 11" x 13" heat insert and place into left hand lung pocket #8.

(Continued on next page)